

The nostalgic delights of our historic villages are yours to discover as you spend lovely summer evenings on any, or all, FREE one-hour evening Town Tours & Village Walks. Designed to evoke memories of life in simpler times, they're an experience to share with family and friends.

Your guides, some in period dress, are experts in local history and architecture. They bring to life the people who lived and worked along the streets you'll travel. Highlighted are properties, both residential and business, revealing the fabric of three centuries of domestic, social and industrial life in our region, one of William Penn's first named counties. Early Quaker families continue to play a part today, just as do those of later arrivals who came to live, work and make important contributions to Pennsylvania's diverse cultural heritage. Here, homes are lovingly restored and show the charm of small town life in the Colonial, Federal, Greek Revival, Victorian and pre-war eras.

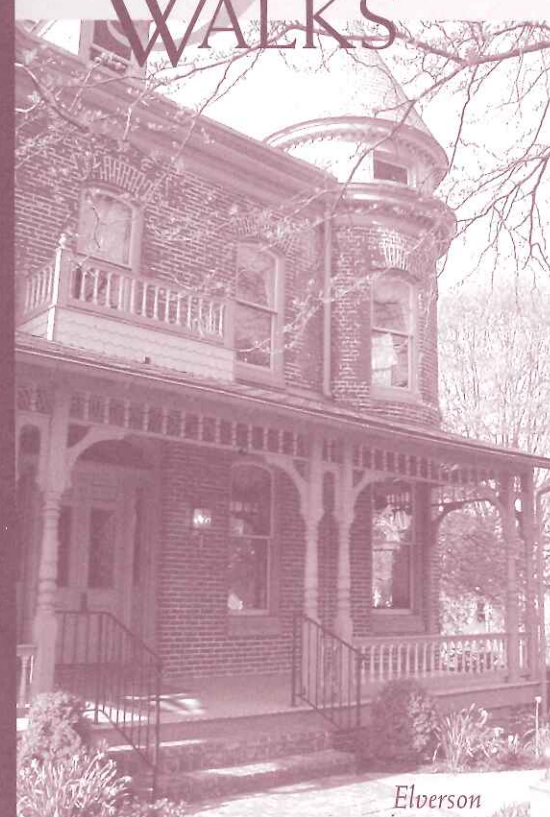
TOWN TOURS & VILLAGE WALKS

2001

Chester County

Home of the Brandywine Valley

TOWN TOURS & VILLAGE WALKS



Elverson

Thursday evenings
June 7 through August 23, 2001

Enjoy a Chester County Summer!

FREE guided evening strolls

2001

TOWN TOURS & VILLAGE WALKS

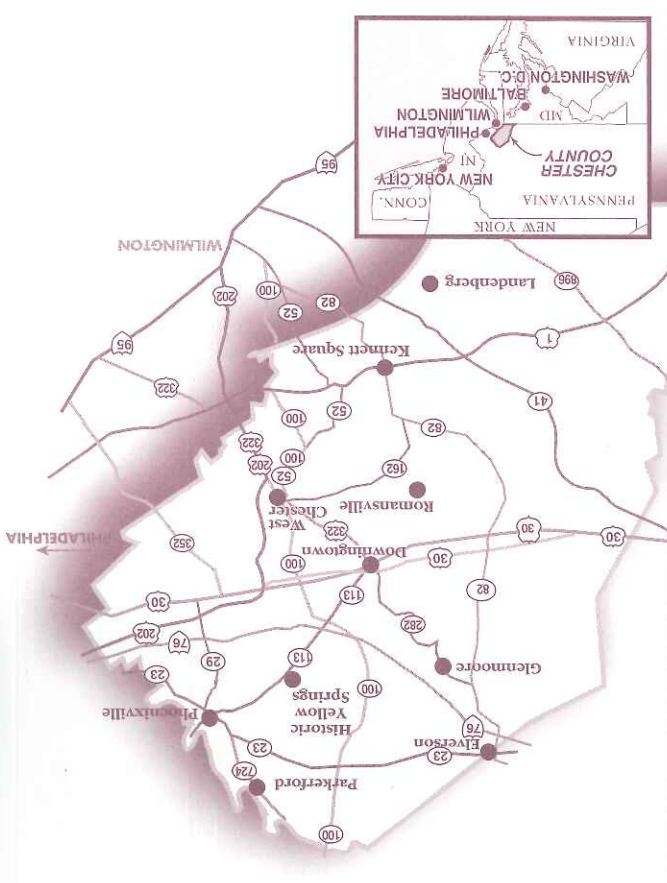
Sponsored by
Chester County Board of Commissioners
Department of Parks and Recreation
and the Chester County Conference & Visitors Bureau
400 Exton Square Parkway
Exton, Pennsylvania 19341

In Pennsylvania, Chester County is second only to Philadelphia in the number of sites listed on the National Register of Historic Places. Many of these, along with designated Historic Districts, are part of this summer's new tour itineraries. Observe the preservation and adaptive reuse of our period architecture—it will give you ideas for your own lifestyle.

Discover how our waterways and mills—French Creek, the Schuylkill and branches of the Brandywine—influenced life in our valleys and along our early toll roads. Tales told of the characters, great and small, who lived here will intrigue and amuse the entire family!

For years, local citizens have researched old records to learn about the historic buildings in their neighborhoods. Not only are they learning 18th- and 19th-century construction methods, but how the Industrial Revolution changed their streetscapes. Descendants of founding families tell amusing anecdotes about their ancestral coping with "modern" 19th-century technology. Partnerships have been established to take facts out of filing cabinets and share stories and folklore with neighbors and all the visitors we welcome to our FREE summer-long program.

For exact starting times and locations, please call the number listed with each weekly tour. Light refreshments follow each walk. Don't forget to wear comfortable shoes!



400 Exton Square Parkway
Exton, Pennsylvania 19341
www.brandywinevalley.com
610-280-6145
800-228-9933

Pennsylvania
Memories last a lifetime.

MAKE AN EVENING OF IT!

Why not make these FREE Town Tours & Village Walks your excuse for a summer getaway? Some of Brandywine Valley's most charming B&Bs and inns offer special package rates. Many are historic properties so you can extend your experience of times past as you enjoy our countryside for an overnight or even a long weekend.

Many of our restaurants will feature "early bird" specials for pre-tour suppers or other dining values after your Town Tour & Village Walk.

For a free Chester County "Official Visitors Guide" or lodging and dining suggestions, call the Chester County Conference & Visitors Bureau at 1-800-228-9933.

MARK THESE DATES ON YOUR CALENDAR:

- JUNE 7—WEST CHESTER
- JUNE 14—DOWNINGTOWN
- JUNE 21—KENNETT SQUARE
- JUNE 28—PHOENIXVILLE
- JULY 5—No Tour
- JULY 12—ROMANSVILLE
- JULY 19—LANDENBERG
- JULY 26—PARKERFORD
- AUGUST 2—HISTORIC YELLOW SPRINGS
- AUGUST 9—ELVERSON
- AUGUST 16—GLENMOORE
- AUGUST 23—HISTORIC ROGER HUNT MILL CLUSTER

Brochure design by Caadt Perspectives, LLC

JUNE 7, 2001

Historic South Walnut Neighborhood, West Chester

TOUR RESERVATION NUMBER: 610-918-7700

SPONSOR: Historic South Walnut Neighborhood Assn.

West Chester belongs to the empire of the brick. Local clay was plentiful, local brick manufacturing boomed, bricks prevented fire from spreading, and they were easier and more economical to use than stone. The Historic South Walnut Neighborhood tour will focus on the rich architectural, historical, and artistic flavor. Centered in the 100 - 300 blocks of South Walnut St., the neighborhood was built largely in the second half of the 19th century during the reign of Queen Victoria in England. A variety of architectural styles will entice you including Greek Revival, Gothic Revival, Second Empire, Stick Style and Queen Anne Revival.



South Walnut Street

JUNE 14, 2001

Along the Turnpike, Downingtown

TOUR RESERVATION NUMBER: 610-269-8257

SPONSOR: Downingtown Historical Society

Celebrate Flag Day and join those who came before you traveling the Philadelphia - Lancaster Turnpike. The Tour begins at the Ashbridge House (Route 30 in Ashbridge Square) which witnessed Washington's troops going to the Whiskey Rebellion, the westward wagon trains, and the funeral train of Lincoln, among other events. After visiting sites along the Turnpike, you will return to the Ashbridge House for a tour. Vintage vehicles will be on display



Ashbridge House

JUNE 21, 2001

Kennett Square

TOUR RESERVATION TELEPHONE: 610-444-6020

SPONSOR: Kennett Square Historical Commission

Site of British and Hessian encampments prior to the Battle of the Brandywine in 1777, and later a "station" on the Underground Railroad, Kennett Square has a long and fascinating heritage. The arrival of the Philadelphia & Baltimore Railroad in 1859 led to the expansion of business and industry. The American Road Machine Co., was the outgrowth of Samuel Pennock's patent on the 1st road making machine. Of particular interest is Kennett High School's academic architecture and in the 1930s the school was recognized as the largest consolidated school district in the United States.



Kennett Square

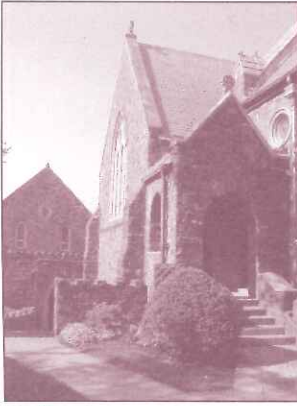
JUNE 28, 2001

Phoenixville

TOUR RESERVATION NUMBER: 610-935-7646

SPONSOR: Historical Society of the Phoenixville Area

Church Street in Phoenixville got its name from the numerous churches located along its length. In fact, the Historical Society of the Phoenixville Area is housed in one of these church structures. Lutheran, Baptist, Methodist, Presbyterian and Catholic congregations add up to a broad range of religious communities. The remaining residences and businesses on Church Street include such a treasure as Phoenixville's famous Hose, Hook and Ladder Company #1. The former site of the celebrated Griffen, Smith and Hill Pottery, makers of Etruscan Majolica, will be seen and described to tour visitors.



St. Peter's

JULY 12, 2001

Romansville

TOUR RESERVATION NUMBER: 610-486-0790

SPONSOR: West Bradford Township Historical Commission

Romansville, located near the geographic center of Chester County, was a crossroad in West Bradford Township. The main road between Lancaster and Philadelphia, a well-known freight road, intersected with Star Gazers, Shadyside and Romansville Roads. It was named for the Roman Family who was a five-generation family there. Most of the village's growth was between 1800 and 1850 with a variety of family businesses, plus two houses of worship and the cemeteries started for the members. There were three hotels, a schoolhouse, and a farm. Most of the buildings were small one and one-half and two stories which can be seen today.



Romansville Meeting

JULY 19, 2001

Landenberg

TOUR RESERVATION NUMBER: 610-274-8951

SPONSOR: New Garden Township Historical Commission

Today Landenberg is a residential village; but, in the nineteenth century it was a bustling town of textile mills. The homes of mill owners and managers on the hill now stand on a quiet residential street; the onetime industry is symbolized by the iron bridge, which spans the White Clay Creek. Visitors can walk the hill comparing pictures of Landenberg in its heyday with buildings as they look today. An "outdoor museum" provides a view of life from Landenberg's industrial past.



Landenberg

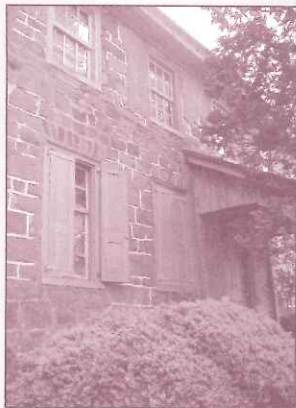
JULY 26, 2001

Parkerford

TOUR RESERVATION NUMBER: 610-933-4424

SPONSOR: East Vincent Township Historical Commission

Come see this late-18th, early-19th century National Register Historic District on the banks of the Schuylkill River in East Vincent Township. The mill village of Parkerford grew up around an early tavern on the road between Philadelphia and Reading. In addition to the extant tavern and several other historic residences, the remains of the Schuylkill Navigation Company Canal bed as well as Lock #57 will be highlighted.



Parker Tavern

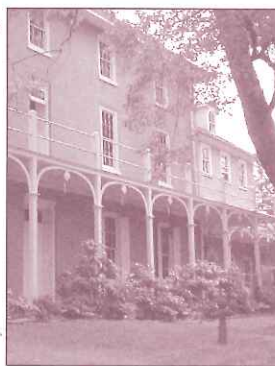
AUGUST 2, 2001

Historic Yellow Springs

TOUR RESERVATION NUMBER: 610-827-7414

SPONSOR: Historic Yellow Springs, Inc.

Join us as we stroll and meet the WOMEN of historic Yellow Springs. The nurses Abigail Harmen Rice and Christina Hench tended Revolutionary War soldiers at the Yellow Springs Hospital. Margaret Holman, innkeeper at the spa, had to petition the County Court to own this land when her husband died. Caroline Moore served as superintendent of the PA Soldiers Orphans School and Literary Institute at a time when women did not do this. Female artists came to the country to study and paint and enjoyed the freedom of creative spirit. Today women continue to lead this village—from our founder to the current president to the director. The feminine spirit is a rich heritage.



Yellow Springs

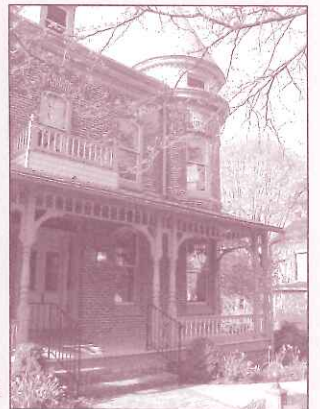
AUGUST 9, 2001

Elverson

TOUR RESERVATION NUMBER: 610-286-1998

SPONSOR: Elverson Historical Commission

The history of Elverson, formerly called Springfield, shows that, from the early 1880s to the present, there has always been a commercial/residential purpose to the town. As you will see, there are still homes and "in home businesses" as well as commercial enterprises within the limits and yet Elverson retains its small town, rural flavor. Come see the homes where residents of years past lived, a few were born here, and then visit the local cemeteries (all within easy walking distance) where these former residents are still among us.



Elverson

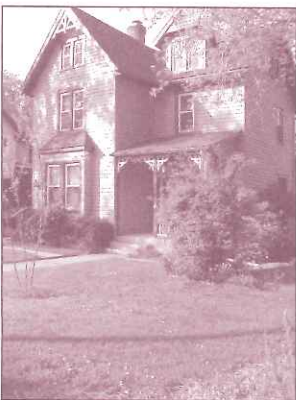
AUGUST 16, 2001

Glenmoore

TOUR RESERVATION NUMBER: 610-942-3632

SPONSOR: Wallace Township Historical Commission

In the 1850s construction of the East Brandywine and Waynesburg Railroad changed the hamlet located on the scenic east branch of the Brandywine Creek. First known as Norwood, this thriving village, renamed Glenmoore, supported a store, a blacksmith shop, a wheelwright, a creamery, a grist mill, worker housing and of course the railroad station. Most have now been adapted to 21st century life, but retain the charm of the past. Hear the story of how Creek Road, Route #282, was laid out to resolve a controversy.



Glenmoore

AUGUST 23, 2001

Historic Roger Hunt Mill cluster, Downingtown

TOUR RESERVATION TELEPHONE: 610-269-0344, ext. 300

SPONSOR: Downingtown Historical Commission

During the French and Indian War, Milltown, was the focal point to serve military posts on the frontier, now central and western Pennsylvania. Roger Hunt, Commissary General under General Bouquet, collected wagons, horses, flour, and accoutrements from southeastern Pennsylvania to assemble wagon trains. Walk the cartway, surveyed in 1729, and observe the head and tail races, tenant and main houses, plus the gristmill and barn ruins. Stand where the "old ford" crossed the Brandywine Creek to meet the east - west road.



Mill Race

TOWN TOURS & VILLAGE WALKS

JUNE 7—WEST CHESTER

JUNE 14—DOWNINGTOWN

JUNE 21—KENNETT SQUARE

JUNE 28—PHOENIXVILLE

JULY 5—NO TOUR

JULY 12—ROMANSVILLE

JULY 19—LANDENBERG

JULY 26—PARKERFORD

AUGUST 2—HISTORIC YELLOW SPRINGS

AUGUST 9—ELVERSON

AUGUST 16—GLENMOORE

AUGUST 23—HISTORIC ROGER HUNT

MILL CLUSTER